



GMT MONTHLY MEMBERSHIP PROGRESS REPORT

Results as of: 10/31/2017

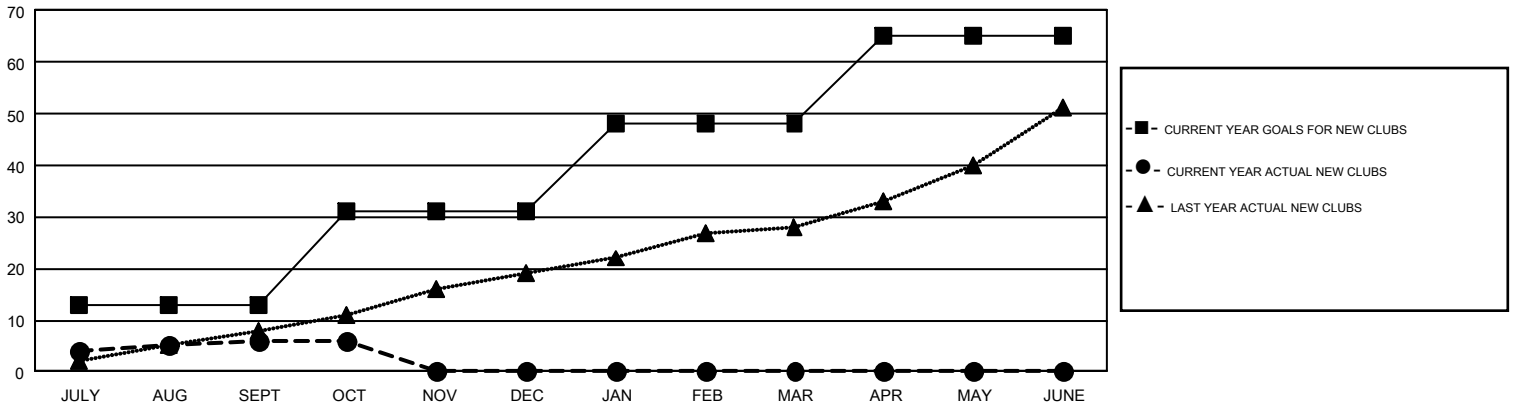
GMT Constitutional Area 1, Group H

GMT: HOWARD HUDSON

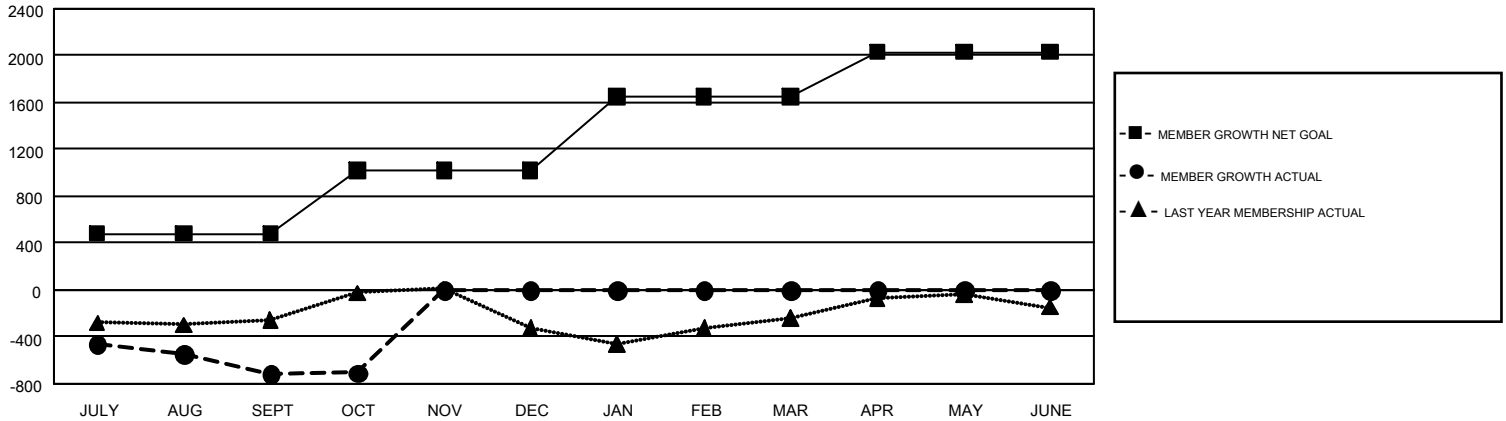
REPORT DOES NOT INCLUDE CLUBS IN UNDISTRICTED AREAS.

Clubs				Members			
RESULTS FOR 2017-2018				RESULTS FOR 2017-2018			
QUARTER	NEW CLUB GOAL	NEW CLUBS	DROPPED CLUBS	QUARTER	MEMBER GROWTH NET GOAL	MEMBER GROWTH ACTUAL	DROPPED MEMBERS ACTUAL (including transfers)
JULY/AUG/SEPT	13	6	8	JULY/AUG/SEPT	481	1,446	1,923
OCT/NOV/DEC	18	0	1	OCT/NOV/DEC	541	435	399
JAN/FEB/MAR	17	0	0	JAN/FEB/MAR	629	0	0
APR/MAY/JUNE	17	0	0	APR/MAY/JUNE	379	0	0

GOALS AND ACTUAL NEW CLUBS CUMULATIVE



GOALS AND ACTUAL MEMBERS CUMULATIVE



DROPPED CLUBS: 9	571 CLUBS OF 1,424 ADDED 1 OR MORE NEW MEMBERS	GENDER DISTRIBUTION MALE 24,282 (62.53%) FEMALE 14,553 (37.47%)
DROPPED MEMBERS DECEASED 175 CLUB CANCELLED 8 OTHER 2,139 <hr/> TOTAL 2,322	CLICK HERE FOR CUMULATIVE MEMBERSHIP DATA	TOTAL FAMILY UNIT MEMBERS 7,927 FAMILY MEMBERS PAYING HALF DUES 4,109